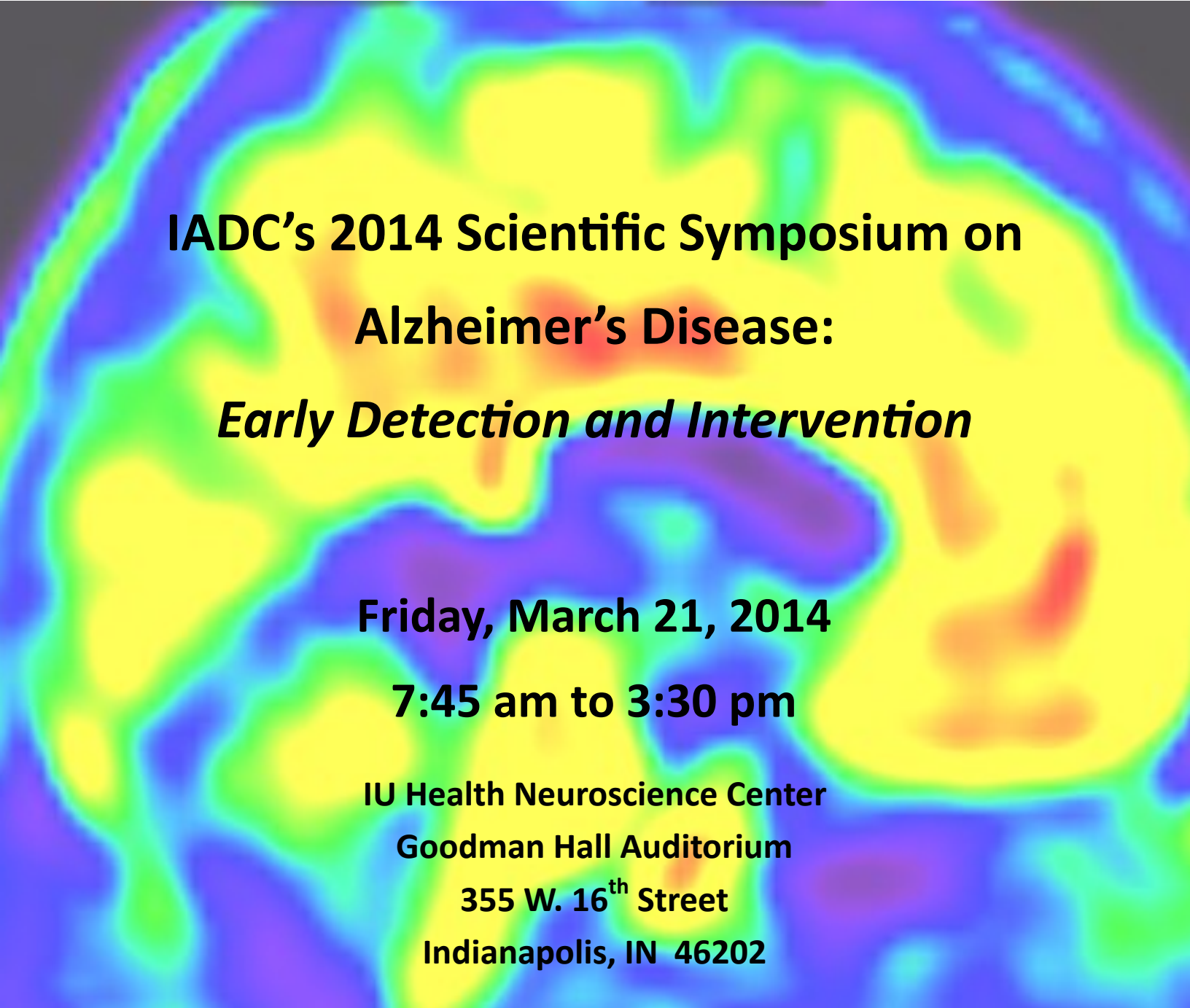




Indiana Alzheimer Disease Center

The background of the lower two-thirds of the slide is a colorful brain scan, likely a PET or SPECT scan, showing various regions of activity in shades of blue, green, yellow, and red. The text is overlaid on this background.

**IADC's 2014 Scientific Symposium on
Alzheimer's Disease:
*Early Detection and Intervention***

Friday, March 21, 2014

7:45 am to 3:30 pm

IU Health Neuroscience Center

Goodman Hall Auditorium

355 W. 16th Street

Indianapolis, IN 46202

DESCRIPTION

The 2014 Scientific Symposium on Alzheimer's Disease: *Early Detection and Intervention* is designed for scientists and clinicians. Family members and the community are welcome. The faculty will present updates on current research at the Indiana Alzheimer Disease Center and in the field, including neuroimaging using biomarkers, genetics, treatments including exercise, and promising early interventions. A special CME session on assessing elderly patients' vulnerability to fraud will also be offered.

The program is offered free of charge, however, registration is required.

OBJECTIVES

At the conclusion of this program, participants will:

- ◆ Understand the use of biomarkers and neuroimaging in early detection of pathology;
- ◆ Learn about promising pharmaceutical interventions and treatments for Alzheimer's disease;
- ◆ Describe the role of genetics in early diagnosis;
- ◆ Recognize and know how to assess cognitive vulnerability in the elderly;
- ◆ Identify the role of occupational therapy in maintaining function in the home environment;
- ◆ Understand fundamentals of exercise science as an intervention in age related decline.

CALL FOR POSTERS: Attendees are invited to submit abstracts highlighting their research related to the symposium theme. Space will be available to display posters throughout the day. Up to 10 authors will be invited to briefly present their poster during the morning break. Please submit a 250 word abstract to iadc@iupui.edu by February 28th.

FACULTY DISCLOSURE STATEMENT

In accordance with the Accreditation Council for Continuing Medical Education (ACCME) Standards for commercial support, educational programs sponsored by Indiana University School of Medicine (IUSM) must demonstrate balance, independence, objectivity, and scientific rigor. All faculty, authors, editors, and planning committee members participating in an IUSM-sponsored activity are required to disclose any relevant financial interest or other relationship with the manufacturer(s) of any commercial product(s) and /or provider(s) of commercial services that are discussed in an education activity.

ACCREDITATION AND

CREDIT DESIGNATION STATEMENTS

Houston Methodist Hospital provides CME for the session on preventing Elder Investment Fraud. The Methodist Hospital System is accredited by the Accreditation Council for Continuing Medical Education (ACCME) to sponsor continuing medical education for physicians.

The Methodist Hospital System designates this live activity for a maximum of 1.0 *AMA PRA Category 1 Credit*[™]. Physicians should only claim credit commensurate with the extent of their participation in the activity.

Note: Verification of the acceptance of attendance certificates by outside agencies is the responsibility of the registrant.

LOCATION

IU Health Neuroscience Center
Goodman Hall Auditorium
355 W. 16th Street
Indianapolis, IN 46202

SYMPOSIUM PLANNING COMMITTEE

Indiana Alzheimer Disease Center
Indiana University School of Medicine
Mary Guerriero Austrom, PhD (Course Director)
Brandy R. Matthews, MD (Course Director)
Jill R. Murrell, PhD
Yvonne Lu, RN, PhD
Andrew Saykin, PsyD
Donna Wert

Indiana Alzheimer Disease Center (IADC)
2014 Scientific Symposium on Alzheimer's Disease:
Early Detection and Intervention
Goodman Hall Auditorium
 Friday, March 21, 2014

AGENDA

7:45 am	<p>Registration and continental breakfast <i>Visit the Scientific Posters and meet with the researchers</i></p>
8:30	<p>Welcome and Introductions Mary Guerriero Austrom, PhD, Wesley P. Martin Professor of AD Education, Department of Psychiatry and Leader, IADC Education Core, Indiana University School of Medicine (IUSM).</p>
8:45	<p>Early Detection: The Role of Neuroimaging and Biomarkers Andrew Saykin, PsyD, Raymond C. Beeler Professor of Radiology & Imaging Sciences and Director of the IADC, IUSM.</p>
9:45	<p>Development of Promising Early Treatments and Interventions Eric Siemers, MD, Senior Medical Director of the Alzheimer's Disease Team, Eli Lilly & Co.</p>
10:45	<p>Break <i>Visit the Scientific Posters and meet with the researchers</i></p>
11:00	<p>Genetics and Early Diagnosis Jill R. Murrell, PhD, Associate Professor, Department of Pathology & Laboratory Medicine and Medical and Molecular Genetics, IUSM.</p>
11:45	<p>Box Lunch (provided) <i>Visit the Scientific Posters and meet with the researchers</i></p>
12:15 pm	<p><i>Special CME Program in Collaboration with IN Secretary of State and Houston Methodist Hospital</i> Preventing Elder Investment Fraud: Assessing for Vulnerability Kelly Griese, Investor Education Coordinator, Indiana Secretary of State; and Brandy R. Matthews, MD, Assistant Professor of Clinical Neurology, Neurology Residency Program Director, Department of Neurology; Associate Leader, IADC Education Core, IUSM.</p>
1:15	<p>Testing Interventions in the Home: The ADMIT Trial Christopher M. Callahan, MD, FACP, Cornelius & Yvonne Pettinga Professor of Medicine, Department of Internal and Geriatric Medicine; Director, IU Center for Aging Research; Scientist, Regenstrief Institute, IUSM.</p>
2:15	<p>Mental Engagement and Physical Exercise: Recipe for Successful Aging? Frederick Unverzagt, PhD, Professor of Psychiatry, Director, Clinical Neuropsychology Residency, Department of Psychiatry; Associate Leader, IADC Clinical Core, IUSM.</p>
3:15	<p>Closing Remarks and Program Evaluation Mary Guerriero Austrom, PhD.</p>

Symposium Faculty



Andrew Saykin, PsyD, Raymond C. Beeler Professor of Radiology and Imaging Sciences; Director, IU Center for Neuroimaging; Director, Indiana Alzheimer Disease Center (IADC), Indiana University School of Medicine (IUSM). Dr. Saykin is a neuropsychologist, whose research focuses on using advanced brain imaging and genetics to understand disorders affecting memory and cognition. Advances in brain imaging have become increasingly important for the early detection of disorders leading to dementia.



Eric Siemers, MD, is the Senior Medical Director of the Alzheimer's Disease Team in the BioMedicine Business Unit at Eli Lilly & Co. He graduated from IUSM and completed his residency in the Department of Neurology also at IUSM. Dr. Siemers currently directs late stage clinical research on investigational treatments for AD and other neurological disorders such as Parkinson's disease at Lilly. His research interests include the use of biomarkers in investigational drug research and the development of trial designs to test the effects of investigational drugs on chronic diseases. Dr. Siemers is a founding member of the Alzheimer's Association Research Roundtable, currently serving as its Co-chair. He is a member of the Steering Committee for the Alzheimer's Disease Neuroimaging Initiative (ADNI), which is funded by the National Institute on Aging and a consortium of pharmaceutical companies.



Jill R. Murrell, PhD, Associate Professor, Department of Pathology & Laboratory Medicine and Medical & Molecular Genetics, IUSM. Her research focus is on the genetics of neurodegenerative diseases. Dr. Murrell also serves as a member of the Medical Advisory Council for the Association for Frontotemporal Degeneration.



Kelly Griese is the Investor Education Coordinator for the Indiana Secretary of State. Through the Indiana Investment Watch program, she travels the state on a mission to improve financial literacy and educate Hoosiers about investment fraud. Her passion for providing valuable and accurate information to the public began at Ball State University, where she studied telecommunications. She has produced newscasts in Reno, West Palm Beach, and most recently, at WTHR in Indianapolis, where she earned an Emmy Award and a National Headliner Award for breaking news. In 2013, she joined the Securities Division in the Secretary of State's office and continues to educate the public.



Brandy Matthews, MD, Assistant Professor of Clinical Neurology, Neurology Residency Program Director, Department of Neurology; Associate Leader, IADC Education Core, IUSM. Her areas of research interest include the clinical presentation of frontotemporal dementia and related disorders, social and emotional cognition in the context of neurodegenerative disorders, and the neuroscience of music. She is also interested in systematic assessment of education in neurobehavior across disciplines including neurology, psychiatry, and geriatric medicine. She continues to explore brain behavior relationships as a member of the Clinical Core of the IADC to further efforts to diagnose frontotemporal dementia and related disorders earlier and more accurately.



Christopher Callahan, MD, FACP, Cornelius & Yvonne Pettinga Professor of Medicine, Division of Internal and Geriatric Medicine; Director of the IU Center for Aging Research; Scientist, Regenstrief Institute, IUSM. Dr. Callahan is board certified in Internal and Geriatric Medicine. His major research interest is improving the care of older adults with late life depression, dementia, and related conditions. His research studies look for ways to enable primary care physicians to deliver excellent care to older adults.



Frederick W. Unverzagt, PhD, Professor of Psychiatry, Department of Psychiatry; Associate Leader, IADC Clinical Core, IUSM. Dr. Unverzagt is also the training director for the residency in Clinical Neuropsychology and he provides outpatient consultations for patients with possible brain disorders in the Neuropsychology Clinic in the Department of Psychiatry. His research interests are focused on the clinical assessment of memory loss and cognitive impairment in the U.S. and abroad. He is IU's site Principal Investigator for one of the largest randomized, controlled trials of a cognitive intervention ever undertaken, the ACTIVE (Advanced Cognitive Training for Independent Vital Elderly) study.

REGISTRATION FORM
Indiana Alzheimer Disease Center's
2014 Scientific Symposium on Alzheimer's Disease:
Early Detection and Intervention
Friday, March 21, 2014

Goodman Hall Auditorium and Conference Center
IU Health Neuroscience Center
355 W. 16th Street, Indianapolis, IN
Registration must be received by Monday, March 17, 2014

TITLE: (Check all that apply) Specialty: _____
 MD PhD PsyD RN MSW CCA CNA CAREGIVER Other (specify) _____

LAST NAME: _____ **FIRST NAME:** _____ **MIDDLE INITIAL:** _____

BUSINESS NAME or AFFILIATE: _____

MAILING ADDRESS—STREET: _____

CITY: _____ **STATE:** _____ **ZIP:** _____

DAYTIME PHONE: _____ **EMAIL ADDRESS:** _____

CME: I request credit for the special CME Program on Preventing Elder Investment Fraud.

Certificate of Attendance: Yes, I wish to have a certificate. No certificate needed.

Please check if you have a special dietary need: Vegetarian Other _____

How did you hear of the IADC's 2014 Scientific Symposium? IADC Website IADC Newsletter
 IADC Facebook IADC Twitter Colleague IU/IUPUI News source
 Flyer posted @ (location) _____

Register online at <http://iadc.iupui.edu/current-events/> or mail form to:
Indiana Alzheimer Disease Center 2014 Symposium on AD
355 W. 16th Street, Suite 2800, Indianapolis, IN 46202
Phone: (317) 963-7297 Fax: (317) 963-7325 email: dwert@iupui.edu

Note: Houston Methodist Hospital provides CME for this event. The Methodist Hospital System is accredited by the Accreditation Council for Continuing Medical Education (ACCME) to sponsor continuing medical education for physicians. The Methodist Hospital System designates this live activity for a maximum of 1.0 *AMA PRA Category 1 Credit*[™]. Physicians should only claim credit commensurate with the extent of their participation in the activity.

Verification of the acceptance of attendance certificates by outside agencies is the responsibility of the registrant.



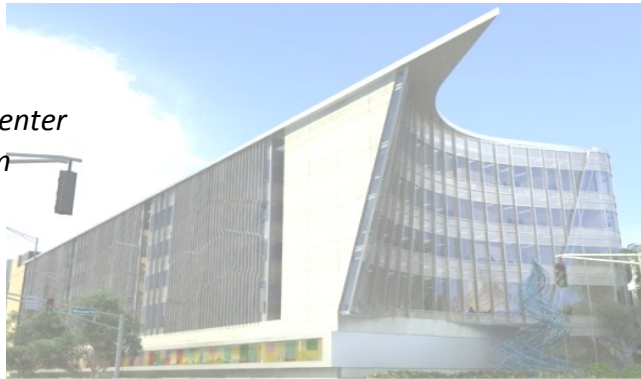
Indiana Alzheimer Disease Center staff wants everyone to feel welcome at this event. If you have a disability and need an accommodation to participate in this program, IADC staff will try to provide it. Please contact us at (317) 963-7297 with your needs 72 hours prior to the event.

LODGING AND ACCOMMODATIONS

Lodging information may be obtained by contacting the Indianapolis Convention and Visitors Association at (800) 556-INDY(4639) or www.indy.org.

LOCATION:

*IU Health Neuroscience Center
Goodman Hall Auditorium
355 W. 16th Street
Indianapolis, IN 46202*



Directions:

Note: Entrance and parking garage are located off of 15th Street, between Senate Avenue and Missouri Avenue. Garage parking is available at a cost of \$5 maximum per day. Payment may be made by cash or credit card inside the building, prior to returning to your vehicle.

From the North

I-65 South to Exit 115 toward 21st Street. Turn left on 21st Street. Turn right onto Senate Boulevard. Continue on Senate Boulevard past IU Health Methodist Hospital and cross 16th Street. Turn left onto 15th Street and follow the signs for parking in the onsite garage.

-OR-

I-69 South to I-465, south to I-70, west to I-65 North to Exit 115 toward 21st Street. On the exit ramp, keep right at the fork and merge onto Senate Boulevard. Continue on Senate Boulevard past IU Health Methodist Hospital and cross 16th Street. Turn left onto 15th Street and follow the signs for parking in the onsite garage.

From the South

I-65 north to Exit 115 toward 21st Street. On the exit ramp, keep right at the fork and merge onto Senate Boulevard. Continue on Senate Boulevard past IU Health Methodist Hospital and cross 16th Street. Turn left onto 15th Street and follow the signs for parking in the onsite garage.

From the East

I-70 (or I-74) to I-65 north to Exit 115 toward 21st Street. On the exit ramp, keep right at the fork and merge onto Senate Boulevard. Continue on Senate Boulevard past IU Health Methodist Hospital and cross 16th Street. Turn left onto 15th Street and follow the signs for parking in the onsite garage.

From the West

I-70 east to I-65 north (the two join temporarily) to Exit 115 toward 21st Street. On the exit ramp, keep right at the fork and merge onto Senate Boulevard. Continue on Senate Boulevard past IU Health Methodist Hospital and cross 16th Street. Turn left onto 15th Street and follow the signs for parking in the onsite garage.

-OR -

US-136 turn east (right) onto Crawfordsville Road, or take I-74 which becomes Crawfordsville Road. Follow Crawfordsville Road (Speedway) which becomes 16th Street. Follow 16th Street to Senate Boulevard/Missouri Avenue. Turn south (right) onto Missouri Avenue. Turn east (left) onto 15th Street and follow the signs for parking in the onsite garage.